

Heritage
THEATRE
presents
ONCE
UPON A
Mattress



Music by
MARY RODGERS

Book by JAY THOMPSON, DEAN FULLER and MARSHALL BARER

Lyrics by
MARSHALL BARER

FARR WEST EYE SPECIALISTS

**Primary Eye Care
Cataract and Laser Surgery
Disease and Dry Eye Management
General Ophthalmology**

**990 S. Medical Dr. Ste G3
Brigham City, UT
435-734-2097**

**2850 N. 2000 W.
Farr West, UT
801-731-6326**

MICHAEL C. CLARK, O.D. SCOTT D. TURNER, M.D.



ONCE UPON A *Mattress*



PRODUCTION TEAM

Director	Meg Clawson
Music Director	Jordan Martineau
Choreographer	Meg Clawson
Stage Manager	Mikenzee Heidrich
Assistant Stage Manager	Kandice Bassett
Lighting Designer	John Harlow
Costume Designer	Meg Clawson
Courtesy of CenterPoint Theater
Props Designer	Rebecca Genter
Microphone Operator	Ashlea Tanner
Lighting Operator	Hydee Weeks
Audio Operator	Mikenzee Heidrich

ONCE UPON A MATTRESS is presented through special arrangement with R & H Theatricals: www.rnh.com.

POLICIES AND PROCEDURES

- No cancellation or refunds.
- Doors open 30 minutes prior to show time.
- Late-comers cannot be guaranteed seating.
- Reserved seating will be held until curtain, after which, alternate seating will be used to accommodate additional audience members.
- No children under the age of 4 years may attend any production (including children in laps).
- Please do not bring outside food or drink into the theater.
- Please turn off all pagers, cell phones and other electronic devices.
- Video and/or audio recording of this performance is strictly prohibited.
- Box Office hours are Monday, Friday and Saturday from 4-6 PM.
- Restrooms and concessions are located in the lobby.

*THANK YOU FOR YOUR COOPERATION!
ENJOY THE SHOW!*

Auditions

The Music Man

March 13 & 14 at 6:30 PM

Visit our website for more information

www.HeritageTheatreUtah.com

HERITAGE THEATRE VOLUNTEERS

BOARD OF DIRECTORS

Terry Haws, *Chairman*

Marsha Holmes, *Vice-Chairman*

Paul Buck, *Treasurer* Nancy Cannon, *Secretary*

BOARD MEMBERS

Valerie Odenthal Greg Lemke

Michele McGarry Jon Allen Meg Clawson

THANK YOU

to ALL of our hardworking volunteers!

If you are interested in becoming a volunteer,
visit the box office for more information.

HERITAGE THEATRE STAFF

Heather O'Grady, *Accounting*
Michele McGarry, *Artistic Director*
Joyce Dean, *Box Office Manager*
Scott Dean, *Asst. Box Office Mgr*
Nancy Baker, *Asst Box Office Mgr*
Tracy Allen, *Co Concessions Mgr*
McKenzie Terry, *Co Concessions Mgr*
Caren McKay, *Contracts Admin*
Kelsy Singleton, *Costume Coordinator*
Greg Lemke, *Facilities Manager*
Shantell Walker, *Gardens*
Valerie Odenthal, *Grants*
Elizabeth Jensen, *Graphic Designer*
Paul Buck, *Grounds Manger*
Nancy Cannon, *House Manager*
John Harlow, *Lighting Specialist*
Marsha Holmes, *Publicity Manager*

Shantell Walker, *Marquee*
Troy Andreasen, *Photographer*
Brianna Taylor, *Photographer*
Abby Payne-Peterson, *Playbill Design*
Shanda Parkinson, *Playbill Production*
Jolynn Hirschi, *Props*
Rebecca Genter, *Props*
Brad McCann, *Scholarship Admin*
Colette Henderson, *Set Inventory*
Marcie Lemke, *Sound Specialist*
Kim Merrill, *IT Specialist/Tech Director*
Aaron Spurlock, *Webmaster*
Amanda Mayne, *Ads and Sponsors*
Rachel Hunt, *Social Media*
Stacey Keller, *Lobby/Reception*
Steven Odenthal, *Show Reviews*
Hollie Swapp, *Press Releases*

CAST OF ONCE UPON A MATTRESS

Princess Winnifred	Rebecca Genter
Queen Aggravain	Amber Kacherian
Prince Dauntless	Caderik Wilson
Sir Harry	Jordan Martineau
Lady Larken	Sarah Johnson
King Sextimus	Tad Wilson
Jester; The Nightingale of Samarkand	Nicole Atkinson
Minstrel	Abby Payne-Peterson
Wizard	Troy Hone
Lady Rowena	Marsha Holmes
Lady Merrill	Brooke Wardle
Lady Lucille	Alanna Christensen
Sir Studley	Trayson Wilson
Sir Luce	Jordan Gardner
Sir Racha	Ashton Bossa
Lady Mabelle	Rachel Hunt
Princess No. 12; Lady Sythia	Courtney Fairbourn
Kate the Kitchen Wench	Melissa Jones
Emily the Chambermaid	Nancy Baker



Meg Clawson

*Director,
Choreographer*

Meg is so excited to be making her directorial debut here at Heritage Theatre. Meg

graduated from USU with a degree in acting and has enjoyed being in many productions at Heritage since then. She is excited to be working on such a fun show, with such a talented cast! Meg would like to thank her wonderful husband Ryan and her family for their constant love and support. She would like to dedicate this show to her daddy, Pete Campbell, who was always her biggest fan.



Mikenzee Howie

*Stage
Manager*

Mikenzee Howie has been stage managing for

over 10 years at several locations across Utah. When she's not stage managing, costuming, doing make-up or styling wigs, you can find her at a Comic Book Convention drawing away with her fellow artists. She is so excited to help put on this production and be part of something new at the Heritage Theatre.

DIRECTORS NOTE

The Heritage Theatre crew is so excited to be bringing *Once Upon a Mattress* to you. When *Once upon a Mattress* debuted in 1960 with a young Carol Burnett as Princess Winifred, you can imagine the idea of this kind of princess; strong, intelligent and more than just a bit weird, was revolutionary. Added to that, *Once Upon a Mattress* puts a quirky twist on a traditional tale. Since then, countless works have sprung from similar propositions. Think of Sondheim's *Into the Woods* and Disney's *Brave*, *Tangled*, *Mulan* and *Beauty and the Beast*. Many of these film and stage productions have a quirky, anti-princess heroine at the helm-- Merida, Rapunzel and, one of my personal favorites, Fiona from *Shrek*. *Once Upon a Mattress* was groundbreaking. It gave girls permission to be loud, to be brash, to be extraordinary and to break the mold. These stories gave a generation of girls like me someone to admire, to look up to and to teach us that it is okay if you are not perfect. These stories teach us just being you is the best gift you can give the world, it's okay to be your own hero and every prince may not be "the one." With its themes of self-confidence, individualism and acceptance in the wrappings of a comedy, *Once Upon a Mattress* is timeless.

When I first read the script for *Once Upon a Mattress*, I was reminded of one of my favorite stories as a child--*The Paperbag Princess* by Robert Munsch. In the story the princess loses her hair and her beautiful clothes to an evil dragon so she has to wear a paper bag. The dragon steals her prince but she rescues Prince Ronald by tricking the dragon. Instead of gratitude, he tells her she is a mess. She responds, "Ronald, you look like a prince, but you are a real bum." and the story ends with the statement that they didn't get married after all. Sometimes the perfect fairy tale comes from an imperfect story.

Once Upon a Mattress is over 50 years old, but more relevant than ever. I am honored to have been given the chance to direct such a classic. I hope our rendition makes you laugh--hard. I want you to enjoy every second with this crazy cast of characters. I hope you find someone to relate to in this story. These fantasy characters aren't so different from you and I. Whether it is the wacky Winifred, the dopey Dauntless, the loving Lady Larken, the weird Wizard, or even the silent Sextimus, I believe there is a little bit of each of them in all of us.

Thanks to the cast and crew for their hard work and thank you for joining us. I hope you enjoy seeing the show as much as I enjoyed directing it.

SCENES & SONGS

Act 1

SCENE 1

A large room in a medieval castle, late March

Prologue/ Many Moons Ago Minstrel
Opening for a Princess Dauntless, Larken, Ensemble
In a Little While Harry, Larken

SCENE 2

A castle corridor, the same day

In a Little While (Reprise) Harry, Larken

SCENE 3

The castle courtyard, a mid-April morning three weeks later

Shy Winnifred, Dauntless, Queen, Ensemble
The Jester, The Minstrel and I Minstrel, Jester, King

SCENE 4

A castle corridor, later that day

Sensitivity Queen, Wizard

SCENE 5

Winnifred's dressing room, later that day

The Swamps of Home Winnifred, Dauntless, Ladies

SCENE 6

A castle corridor, later that day

Spanish Panic Queen, Wizard, Ensemble

SCENE 7

Tents in the court yard, late evening the same day

Normandy Minstrel, Jester, Larken, King

SCENE 8

The courtyard, a few minutes later

Spanish Panic (Reprise) Ensemble

SCENE 9

The Great Hall, immediately following

Song of Love Dauntless, Winnifred, Ensemble

SCENES & SONGS

Act 2

SCENE 1

The castle, same day, that night

Quiet (The Queen Insist on Quiet!) Queen, Ensemble

SCENE 2

A room in the castle, later that night

Happily Ever After Winnifred

SCENE 3

A castle corridor later that night

Man to Man Talk Dauntless, King

SCENE 4

The Wizard's chamber, later that night

SCENE 5

A castle corridor, later that night

Very Soft Shoes Jester, Ladies

SCENE 6

The castle, same day, that night

Yesterday I Loved You Harry, Larken

SCENE 7

Winnifred's bedchamber, later that night

Nightingale's lullaby Nightingale

SCENE 8

A castle corridor, the next morning

SCENE 9

The Banquet Hall, a few minutes later

Finale All

Tag us! For a chance to win a — FREE — HERITAGE T-SHIRT!

TO ENTER, FOLLOW
THESE 3 STEPS!



STEP 1



Take a picture of you
with your playbill!

STEP 2



Post the picture on
social media!
Make sure it's public!

Wear your shirt
during the show,
and get a free drink
with purchase of a
concession!

STEP 3



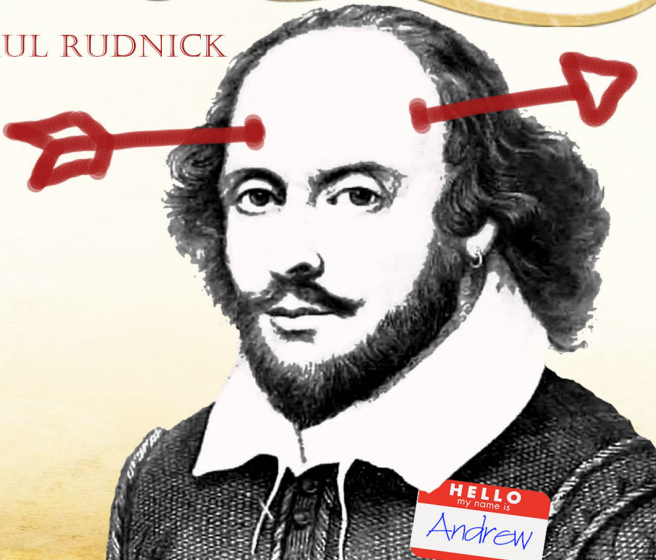
WINNER WILL
BE CHOSEN
AT THE END OF
THE RUN OF
THIS SHOW!

TAG US!
#HCTOnceUponAMattress

Heritage
THEATRE
presents

I HATE
Hamlet

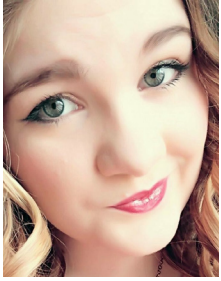
BY PAUL RUDNICK



COMING SOON!

April 12th – May 4th

CAST BIOGRAPHIES



Rebecca Genter

Princess Winnifred

Becca is tickled pink to be living out the dream of being a swamp princess. She has been moat swim training for years. She would like to thank her arms for always being by her side, her legs for always supporting her and her fingers because she can always count on them.



Amber Kacherian

Queen Aggravain

Amber is extremely excited to be appearing in her very first show at the Heritage Theatre! Amber currently lives in Logan and primarily performs in musical theatre productions in Cache Valley. Some of her favorite past roles include Dorothy in "The Wizard of Oz," Asaka in "Once on This Island," Mrs. Potiphar in "Joseph" and Princess Winnifred in "Once Upon a Mattress." Amber would like to thank the Heritage Theatre for this wonderful opportunity and for making her part of the Heritage family!



Caderik Wilson

Prince Dauntless

Caderik has been seen in many shows at Heritage, most recently "Camelot" (Sir Lionel). Caderik loves theatre and is very grateful for all the opportunities to perform and the friends he has made. He hopes you enjoy the show!



Jordan Martineau

Sir Harry, Music Director

Jordan was thrilled to be Music Director for his first time here! Jordan is a professional organist and pianist. He has recently been seen in "Ragtime" and "The Little Mermaid" at Centerpoint Legacy Theater and "Annie Get your Gun" at the Egyptian Theater. Jordan speaks Spanish and Portuguese and enjoys riding motorcycles.



Sarah Johnson

Lady Larken

Sarah is delighted to play at the Heritage with such a fun, talented cast. Her favorite past roles include Lucy Harris in "Jekyll

CAST BIOGRAPHIES

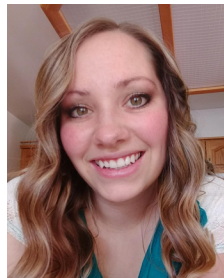
& Hyde," Baker's Wife in "Into The Woods," Narrator in "Joseph & The Amazing Technicolor Dreamcoat," Lily Belle in "Curious Savage" and Nikki Harris in "Curtains." Her favorite role of all time is mama to her own little knights and lady: Hunter, Kyler, Trae and Paisley. Much love and thanks to Brett for sitting this one out to hold down our castle.



Tad Wilson
King Sextimus

Tad is beyond thrilled for the opportunity to join this amazing cast in his 8th

production at Heritage. He was last seen in "Oklahoma." He's grateful to have performed roles in "Fiddler on the Roof," "Jekyll & Hyde" and "Big River" and others. His most recent performance was "Ragtime" at Centerpoint Legacy Theater. "Being cast with my sons is an unforgettable experience. Thank you to my beautiful wife Michelle for her love and support!"



Nicole Atkinson
Jester, The Nightingale of Samarkand

Nicole has

a Bachelor's Degree in Vocal Pedagogy from Weber State University. She has her own studio in Pleasant View, where she has been teaching private voice lessons for 8 years. She loves to perform. Some of her recent roles have been Crystal/Trio Singer in "Little Shop of Horrors," Isabel in "Scrooge: A Christmas Carol." She also sings with the Weber State Alumni Singers. Nicole loves her family. She has been married 9 years and has 2 beautiful children.



Abby Payne-Peterson
Minstrel

Abby is so thrilled to be playing the Minstrel in this production of "Once Upon A Mattress." Most recently, Abby has performed as Lily in "Secret Garden" and Widow Corney in "Oliver." Abby is so grateful for those who've supported her — especially her husband, the production staff and her parents.



Troy Hone
Wizard

This is Troy's 7th appearance at Heritage Theater. Most recently seen as Lumiere

CAST BIOGRAPHIES

in "Beauty and the Beast" and as Shrek in "Shrek, The Musical." Troy made his 1st debut at the theater back in 1999. He would like to thank his loving family for being supportive of all of his hobbies which include: softball, golf, gardening, theater, meditation, karaoke and procrastination.



Marsha Holmes
Lady Rowena

You may recognize Marsha as she is a regular here at HCT both

on and off the stage. This is her 13th production here in 3 years. She also serves on the Board of Directors as Publicity Chair and Vice President. As always, thank you for supporting this community, theatre and the arts! A special thank you and much love to her family and friends for always supporting her.



Alanna Christensen
Lady Lucille

Alanna is excited to be part of this entertaining show. Her most

recent credits include "The Drowsy Chaperone," "Disney's Beauty and the Beast," "Fiddler on the Roof,"

"Jekyll & Hyde," and "Shrek: the Musical," all at HCT. Alanna is very grateful to her parents for raising her with literature and the arts. "I love being able to explore and better understand myself, others, and humanity through theater."



Brooke Wardle
Lady Merrill

Brooke is elated to be back on stage with the love of her life!

When she's not busily chasing kids, zoning feet, or reviewing documents, she thoroughly enjoys the simple things of life. A few of Brooke's favorite roles at The Heritage Theatre have been: Adelaide in "Guys N Dolls" and Lottie in "Enchanted April." Thanks to my wonderful family and friends for all your love and support. I am so grateful for all of you. You make me a better human!



Trayson Wilson
Sir Studley

Trayson came back to Heritage after appearing as the Arkansas

kid in "Big River." He also has been in many high school plays including: "The Hunchback of Notre Dame," "The Little Mermaid," "Footloose" and more!

CAST BIOGRAPHIES



Jordan Gardner
Sir Luce

Jordan is excited to be returning to the stage. While in high

school, he performed in "Camelot," "Joseph and the Amazing Technicolor Dreamcoat," and "White Christmas." "Once Upon A Mattress" will be his second show at Heritage Theatre, where he first caught the acting bug doing "Bye, Bye, Birdie" in 2010.



Ashton Bossa
Sir Racha

This is Ashton's first show at the Heritage Theatre and he is delighted! His

previous theatre experience at Box Elder High including "Much Ado About Nothing," "The Hunchback of Notre Dame," and "The Crucible." Ashton would like to take this time to thank his friends and family and especially Terry Crews for always being such an inspiration to him!



634 East 200 South
BRIGHAM CITY
gfc-utah.com
435-723-5236

FREE CONSULTATION



Brent and Staff,

We just wanted to thank you for all of your kindness and generosity to our family during this difficult time. We appreciate the concern and attention that was given to make sure Bob's services were exactly what they need to be.

Thank you again, The McNeely Family

\$300⁰⁰ OFF
YOUR CASKET
ON PRE-ARRANGEMENT

GILLIES Not valid with other offers. Must present at time of purchase. Expires 10/31/18

\$350⁰⁰ OFF
AT NEED
FUNERAL SERVICE

GILLIES Not valid with other offers. Must present at time of purchase. Expires 10/31/18

Individual Memorials · Companion Memorials

Bench Memorials · Custom Memorials · Memorial Etchings · Custom Art

CAST BIOGRAPHIES



Courtney Fairbourn
Princess No. 12,
Lady Sythia

Courtney was last seen at Heritage Theater's stage

in "Miracle on 34th Street". Other credits include "Seussical the Musical" and "Into the Woods." She is currently studying French and music teaching at Utah State. "Thank you to my incredible family, my theater friends, Leah Kennedy and my car (for not dying). Thanks for making this experience possible."



Rachel Hunt
Lady Mabelle

This is Rachel's eighth appearance on the Heritage Theatre stage!

Her favorites among those include "Fiddler On The Roof", "Camelot" and "Crazy For You". Rachel considers it a huge blessing to be involved in this theatre and is so grateful for the many wonderful experiences and friendships gained over the past few years. She can only speak one word to express this sentiment: "Yes!"

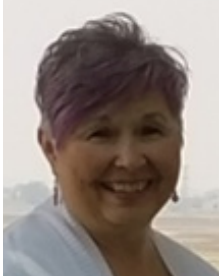

We have a winner!



Congratulations
TO THE WINNER
of our
"#Hashtag for a T-Shirt" Contest!

Winners of the #Hashtag contest receive a FREE Heritage T-Shirt!
To learn how to enter, see the center of the playbill!

CAST BIOGRAPHIES



Nancy Baker

Emily the Chambermaid

This is Nancy's 16th show at Heritage. She was last seen on

this stage when she played Mrs. Greer in "Annie" in 2017. She has also reprised her role as Karil "Kitty" Kitteridge, in "Five Carols for Christmas" at the Main Street Playhouse in Tremonton during the 2017 and 2018 Christmas season. Nancy is glad to be back on stage Heritage and is hoping to make the audience glad they came.

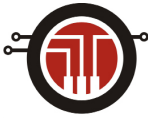


Melissa Jones

Kate the Kitchen Wench

Melissa is a veteran of the stage and has been in many

roles at the Heritage. Her most recent role here was in "The Musical Comedy Murders of 1940." You may also remember her in "Plaza Suite," and "Angel Street." She began acting when she was a teenager and has a great passion for theater. She has performed at Centerpoint Theatre and the Terrace Plaza Playhouse.



technovation

D E S I G N

Our goal is to provide you the IT support you need so you can focus on your business.

Monthly Outsourcing Plans

Hourly Support

Technology Project Management and Implementation

Technology Planning and

Budgeting

Contact us today at 801-627-2866 for a free consultation and discover technology that just works.

Ad space for
Square One
Printing

JOHN FINDLAY PIANO SERVICE

SINCE 1999
BRIGHAM CITY, UT



THOUSANDS OF
PIANOS TUNED &
SERVICED

CALL OR TEXT TODAY
435-730-7788

#1 RANKED DEALER
IN UTAH*  
THANK YOU.  



HANSEN
BRIGHAM CITY, UTAH

1175 South Commerce Way, Brigham City, UT
(435)723-5255 • (800)478-2349 • www.hansenmotors.com

*Based from 2008-CURRENT GM Dealer Retail Sales Performance (RSI), see dealer for details

HERITAGE COMMUNITY THEATRE

ONCE UPON A MATTRESS

DONORS

Guardian Angels **\$5,000+**

Box Elder County
and the Tourism Tax
Advisory Board
George S and Dolores
Dore Eccles Foundation
Dr. Dale & Adele Young
Electronic Theatre
Controls, Inc.

Angels **\$1,000-4,999**

Brigham City Ladies
Community Club
Marie Eccles Caine
Foundation
Ron & Linda Mortensen
Anonymous

Underwriters **\$500-999**

Tom & Alida Hannum &
Family
Ken & Nancy Kennedy
Scott Nelson
Lynn Whipple
Bonnie Richardson
Memorial
Tom & Alida Hannum
Gillies Funeral Chapel
Ned & Gail
Weinshenker

Benefactors **\$250-499**

Gillies Funeral Chapel
Rob & Jeralynn Bishop
Deloss Everton
Karen Everton
Gary Bywater

Jeff & Claudia Bigler
Anonymous

Patrons **\$100-249**

Terry & Melanie Haws
Terry & Nicole Haws
Verl & LaRaine Petersen
Family Trust
Kim & Shela Merrill
Helen Felt
Kimilee Campbell
Barbara Poelman
G. Val & Karen Lofgreen
Lynn & Renee Beard
Stan & Lil Graves
Richard & Joan Kimber
Cal & Reva Wiggins
Ross & Kaye Bowman
Enos & Marilyn Bennion
Anonymous
Gail & Ned
Weinshenker
David & Sheila Lewis
Randall M. Capener
Donald & Renee
Gilmore
Ethel Mae Bowcutt
W. Clark & Susan
Andersen
Marilyn Bennion
Bruce & Valannah
Vellinga
Michael Sumko D.O.,
P.C.
Mike & Yvonne Purcell

Friends **\$1-99**

Richard Laramée

Helen Hansen
Radene Morgan
Bonnie Griggs
Kenneth Godfrey
Wayne Holmes
Ken & Mary Ellen
Bischoff
Bob & Naomi Johnson
Alan & Lola Cain
Val & JoEllen Gunther
Pat Anderson
Karen Nisonger
Darlene Miller
Jerry & Doris D'Asto
United Way of Northern
Utah
Amazon Smile
Anonymous
Renee Beard
Stan Jacobson
Patricia Fox
Bob & Naomi Johnson
Stephanie Gallegos
RaDene Morgan
Muriel Johnson
Wendell & Rosalie
Christensen
Wes & Carolyn Boman
Lynette & Lonny
Winterton

In Kind Donations

ProponentIT
Rocky Mountain Power
Ned Young
Wiggins & Co., P.C.



Anne
OF GREEN GABLES

JAN 18TH -
FEB 9TH



ONCE
UPON A
Mattress

MAR 1ST -
MAR 23RD



I HATE Hamlet

APR 12TH -
MAY 4TH



THE
MUSIC
MAN

MAY 31ST -
JUNE 22ND



— THE —
LION KING JR

JULY 19TH -
JULY 22ND



CATCH ME
If You Can

AUG 23RD -
SEPT 14TH



SWEENEY
TODD
THE DEMON
BARBER OF
FLEET STREET

OCT 11TH -
NOV 2ND



Prancer

NOV 29TH -
DEC 21ST